

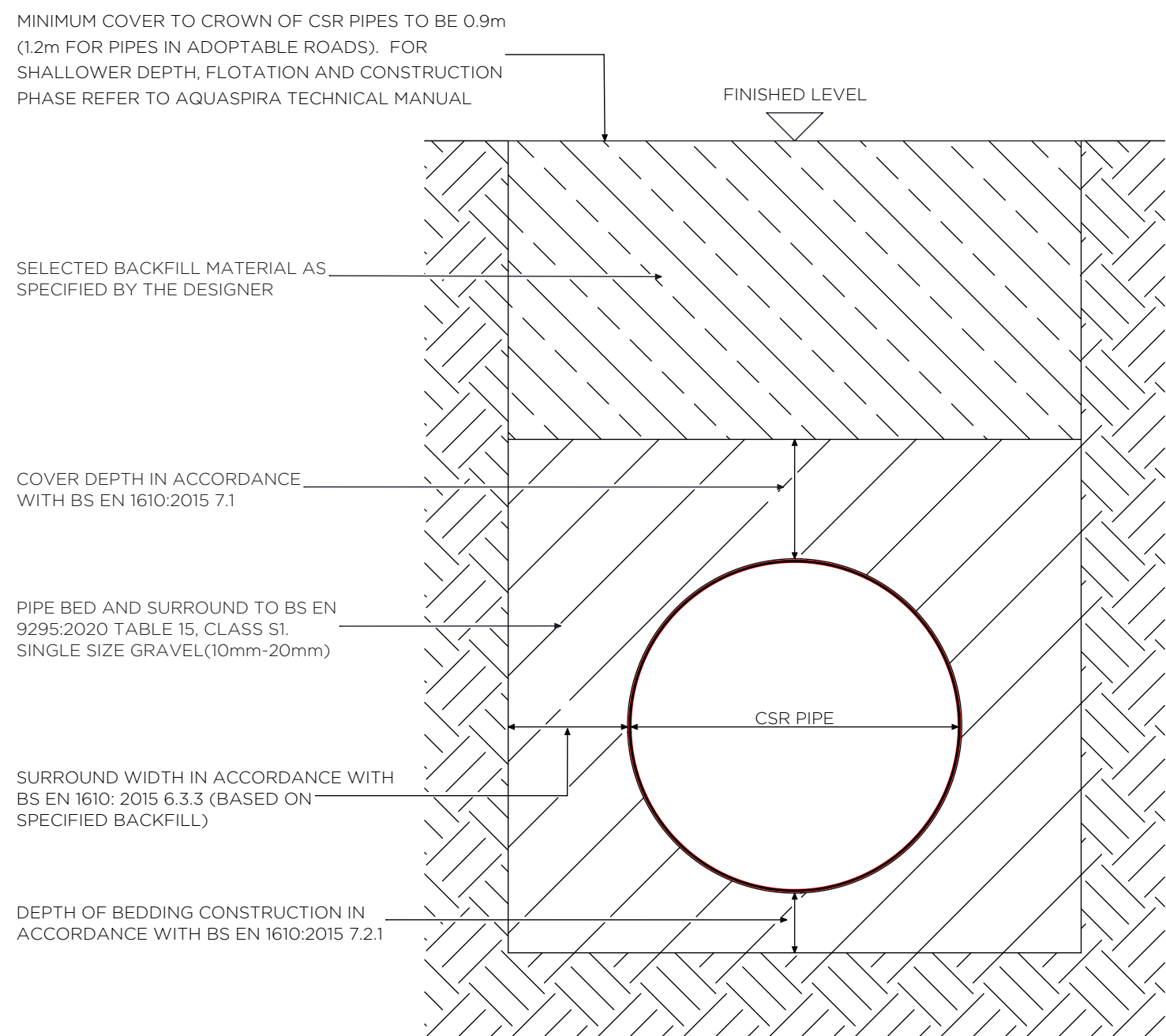
PIPE SPECIFICATION (SCALE 1:15)

STANDARD PIPE INFORMATION	
PRODUCT CODE:	P1152600
A - PIPE INNER DIAMETER	1500 mm
B - PIPE OUTER DIAMETER	1582 mm
C - SPIGOT OUTER DIAMETER	1594 mm
D - SOCKET OUTER DIAMETER	1608 mm
E - SOCKET OUTER DIAMETER INCLUDING FLARE	1620 mm
F- EFFECTIVE LENGTH	2600 mm
G - OVERALL LENGTH	2780 mm
NOMINAL WEIGHT (KG)	216 kg
NO. OF PIPES PER FULL LOAD	8
METRES PER FULL LOAD	20.8 m

STUBS:	
NOMINAL DIAMETER	1500 mm
EFFECTIVE LENGTH	1300 mm
PRODUCT CODE - PLAIN END/SPIGOT	P1151301
PRODUCT CODE - PLAIN END/SOCKET	P1151302

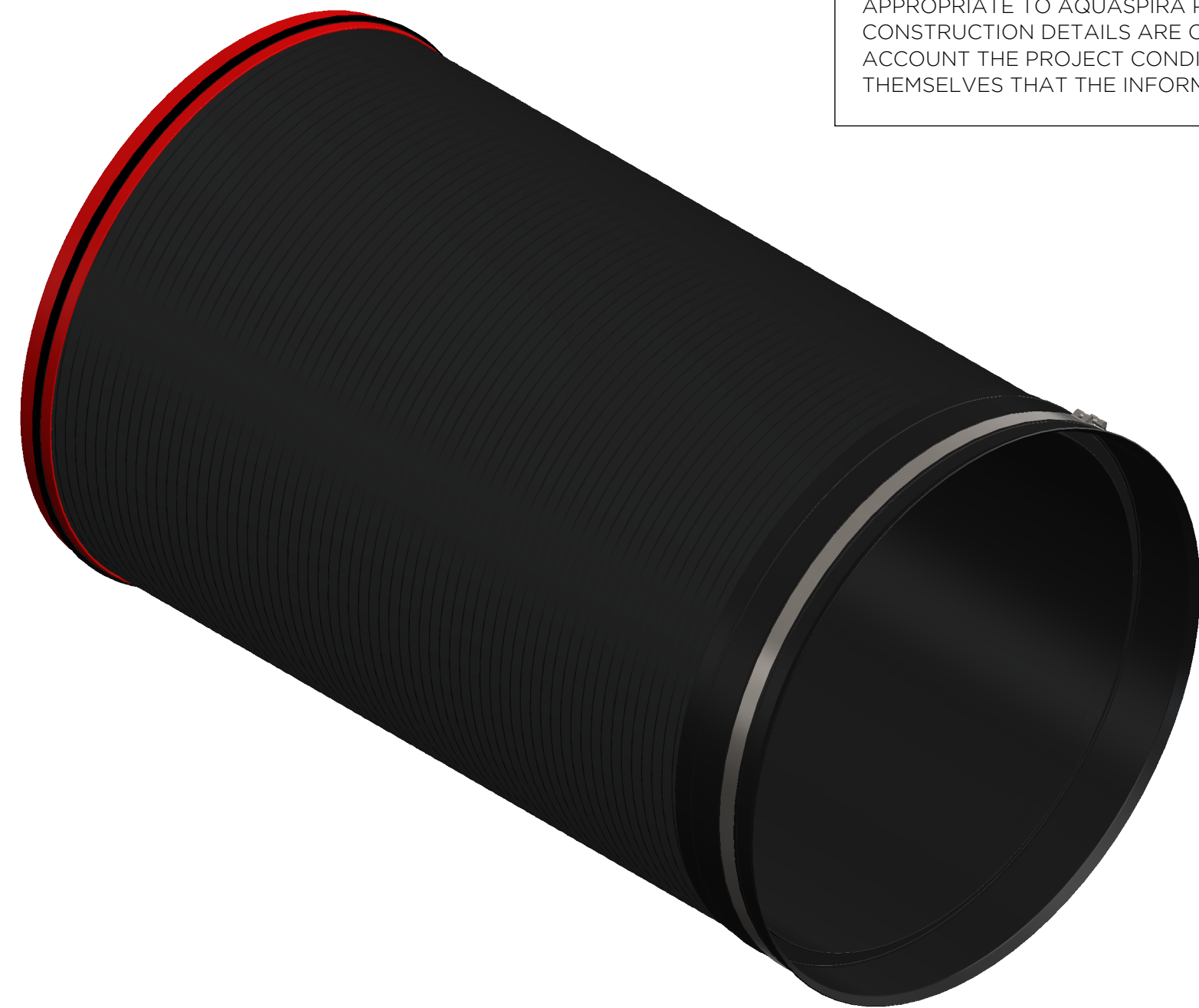
SHORT-TERM RING STIFFNESS	3 kN/m ²
LONG-TERM RING STIFFNESS	2.6 kN/m ²

NOTE: MANUFACTURING TOLERANCES ON ALL DIAMETERS TO ±6mm AND ALL LENGTHS TO ±50mm



CSR SECTION BED AND SURROUND DETAIL
(NOT TO SCALE)

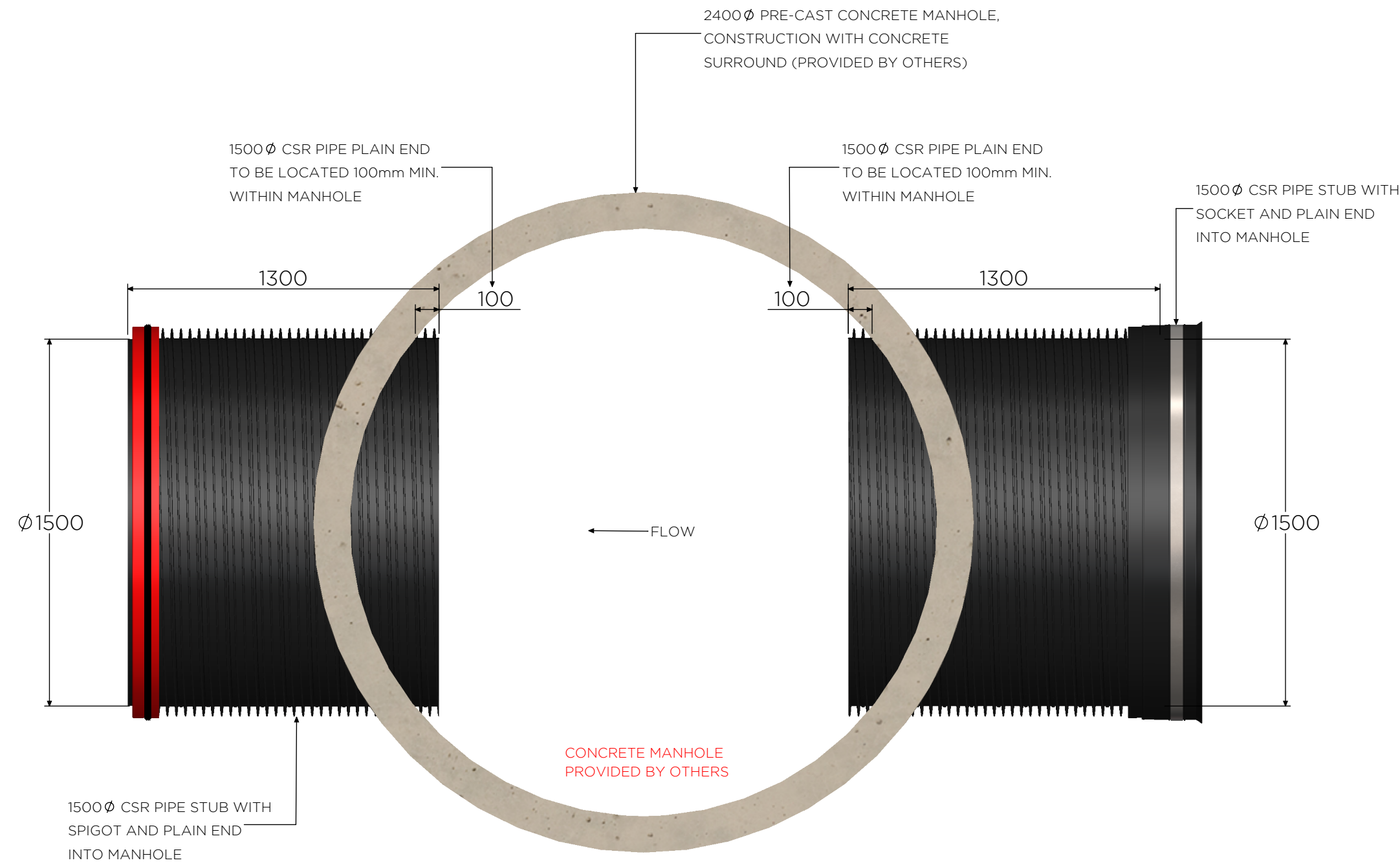
FOR SITE SPECIFIC DRAWINGS, DIMENSIONS AND STRUCTURAL CALCULATIONS, PLEASE EMAIL tech@aquaspira.com or TEL: 01282 608510



ISOMETRIC VIEW (SCALE 1:15)

NOTE:
THIS DRAWING HAS BEEN PRODUCED FOR THE PURPOSE OF OFFERING A PROPOSED SOLUTION TO ASSIST THE PROJECT ENGINEER WHEN ASSESSING THE SUITABILITY OF AQUASPIRA PRODUCTS. THE INFORMATION CONTAINED IN THIS DRAWING IS APPROPRIATE TO AQUASPIRA PRODUCTS ONLY. ALL REFERENCES TO ASSOCIATED CONSTRUCTION DETAILS ARE OFFERED AS TYPICAL DETAILS AND DO NOT TAKE INTO ACCOUNT THE PROJECT CONDITIONS. THE PROJECT ENGINEER/S MUST SATISFY THEMSELVES THAT THE INFORMATION PROVIDED IN THIS DRAWING IS SATISFACTORY.

NOTE:
BS EN 9295:2020 SECTION A.10.3 STATES THAT ROCKER PIPES ARE NOT REQUIRED FOR AQUASPIRA PIPES. THIS DETAIL SHOWS A METHOD FOR BUILDING PIPES INTO MANHOLES UTILIZING HALF-LENGTH PIPES WHERE IT IS NOT PRACTICAL TO BUILD IN FULL LENGTH PIPES.



PLAN VIEW

DETAILS OF PRE-CAST CONCRETE MANHOLE
WITH CSR PIPE STUBS

- NOTE:**
- FOR DETAILS OF TRADITIONAL MANHOLE CONSTRUCTION REFER TO SEWERS FOR ADOPTION OR SEWERS FOR SCOTLAND.
 - ALL DIMENSIONS ARE NOMINAL AND IN MILLIMETERS UNLESS OTHERWISE SPECIFIED.
 - PLEASE REFER TO AQUASPIRA TECHNICAL MANUAL AND SITE HANDBOOK FOR DETAILED INFORMATION ON PIPE INSTALLATION.
 - ALL STAINLESS STEEL TO BE GRADE 304 AND 4mm THICK, UNLESS OTHERWISE SPECIFIED.
 - ALL PIPE SPECIFIED TO BE AQUASPIRA CSR PIPE.

PIPE BEDDING NOTES:

- PROCESSED GRANULAR MATERIAL TO INCLUDE AGGREGATES TO BS EN 12620:2002 AIR-COOLED BLAST FURNACE SLAG TO BS EN 12620:2002 AND LIGHTWEIGHT AGGREGATES TO BS EN 13055:2016.
- ALL TEMPORARY ENABLING WORKS ARE BY OTHERS.
- PROJECT ENGINEERS TO CONFIRM THE BACKFILL DETAILS ARE APPROPRIATE FOR THE SITE GROUND CONDITIONS AND LOADING CRITERIA.
- DURING CONSTRUCTION, HA40/01 SECTION 2.3 RECOMMENDS MINIMUM 1m COVER FOR PIPES SUBJECT TO CONSTRUCTION TRAFFIC LOADING.
- RECLAIMED AND SITE WON MATERIAL TO BE REVIEWED AND APPROVED BY MAIN PROJECT ENGINEER PRIOR TO USE AS BACKFILL.
- WHERE MINIMUM COVER DEPTHS SHOWN CANNOT BE ACHIEVED, A REINFORCED CONCRETE PROTECTION SLAB IS REQUIRED. FOR DETAILS PLEASE SEE AQUASPIRA TECHNICAL MANUAL.

FLOTATION:

PIPES ABOVE 1500 Ø MAY REQUIRE MORE THAN 900mm COVER. PLEASE REFER TO AQUASPIRA TECHNICAL MANUAL.

aquaspira

Drawing Title:
CONSTRUCTION DETAIL AND DATA SHEET -
1500 Ø CSR PIPE 2.6m

Date:	Scale:	Drawn:	Checked:
	AS SHOWN	JA	
Drawing No:	P1152600	A1	

**FOR REFERENCE
PURPOSES ONLY**

AQUASPIRA PRE-FABRICATED PIPELINE ACCESS UNITS ARE ALSO AVAILABLE. PLEASE SEE <https://www.aquaspira.com/products/pipeline-access>